



KMM

KNOWLEDGE MINING ACADEMY

Unlocking
Potential
Empowering
Futures

TABLE OF CONTENTS

03.

WELCOME

05.

SUMMARY OF
SERVICES

07.

L&D SERVICES

09.

CONTACT US

04.

VISION AND MISSION

06.

SDF SERVICES

08.

EE AND B-BBE
SERVICES

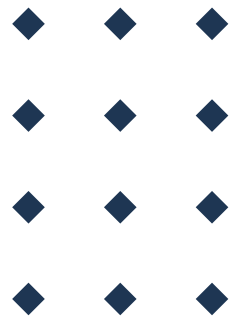
Welcome Message

At Knowledge Mining Academy, ethical conduct and customer service lie at the core of everything we do.

We are committed to upholding the highest standards of integrity, ensuring transparency, honesty, and fairness in all our endeavors.

Our unwavering dedication to exceptional customer service drives us to deliver personalized, reliable, and memorable experiences that exceed expectations.

We believe that by placing ethics and customer satisfaction as our top priorities, we create lasting relationships built on trust, respect, and a genuine commitment to making a positive impact.



Diana Esteves
CEO / FOUNDER



About Our Company

Welcome to Knowledge Mining Academy, where we believe in **Unlocking Potential and Empowering Futures through True Transformation.**

We offer comprehensive services in Skills Development Facilitation (SDF), Learning and Development (L&D), Employment Equity (EE), and Broad-Based Black Economic Empowerment (B-BBEE) and 5 Lens Enneagram Assessments and Coaching.

Our mission is to drive meaningful change by offering tailored solutions that foster inclusivity and unlock the untapped potential within organizations. We understand that true transformation requires more than just ticking boxes; it requires expert guidance, strategic planning, and a deep understanding of the ever-evolving landscape.

With our wealth of experience in L&D, SDF, EE, and B-BBEE, we are equipped to help organizations navigate the complexities of transformation. We partner with our clients to create holistic solutions that make a lasting impact. By joining us on this transformative journey, you will unlock a future filled with growth, equity, and sustainable success.

We believe in the power of knowledge, and we are committed to empowering individuals, teams, and organizations to reach their full potential. Our engaging and easy-to-understand approach ensures that our clients receive the support they need to excel in their transformational efforts. Let us help you unlock your potential, foster inclusivity, and shape a future that is built on growth, equity, and sustainable success. Together, we can make a difference.



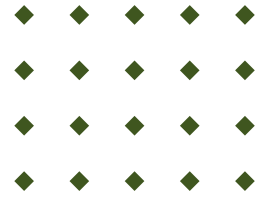
Vision

Our vision is driven by the belief that knowledge is the key to unlocking human potential and driving positive change in the world. We envision a future where every individual, regardless of their background, has equal access to education, opportunities, and resources. Through our transformative solutions, we strive to empower individuals, organizations, and communities to create a more inclusive, equitable, and sustainable world.

Mission

Our mission is to be at the forefront of driving impactful change through tailored solutions and expert guidance. We are dedicated to fostering a culture of continuous learning, growth, and innovation. By empowering individuals, teams, and organizations, we aim to unlock their untapped potential, promote inclusivity, and shape a future built on principles of growth, equity, and sustainable success. Together, we can make a profound difference in the world by creating lasting and meaningful impact.

Summary of Services



Skills Development Facilitation (SDF):

Our (SDF) services empower organizations to unlock their full potential by addressing skills gaps, fostering lifelong learning, and ensuring SETA compliance. We offer customized training programs, SETA compliance support, assistance with WSP and ATR submission, OFO code mapping, SETA grant management, and skills gap analysis. With our expertise, your organization can bridge skills gaps, access financial incentives, and develop a skilled workforce capable of driving sustainable success.



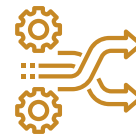
Employment Equity (EE):

Promote diversity, inclusivity, and equal opportunities within your organization. Our EE services ensure compliance with employment equity legislation and support the implementation of effective policies and practices. We provide guidance on creating inclusive workplaces, conducting equity audits, and developing employment equity plans that foster a culture of equal opportunities.



Learning and Development (L&D):

In addition to offering our own e-learning courses and training, we provide comprehensive management services for learnerships and internships. We act as the crucial link between our clients and pre-selected training providers, streamlining the process and ensuring a smooth experience. Our clients can benefit from this service at no additional cost. Our management services encompass all aspects, including coordinating and overseeing the learnership or internship programs, managing administrative tasks, and ensuring compliance with relevant regulations. Further to this, we offer 5 Lens Enneagram assessments and coaching.



Broad-Based Black Economic Empowerment (B-BBEE):

Navigate the complexities of B-BBEE legislation and achieve meaningful transformation. Our B-BBEE services offer expert advice, assistance with scorecard assessments, and guidance on developing and implementing B-BBEE initiatives. Promote economic empowerment and inclusivity as you drive your organization forward.



SDF Services



Key Functions of our Accredited Skills Development Facilitator (SDF) Services:

Skills Development Planning: Develop comprehensive skills development plans aligned with strategic objectives and SETA requirements.

SETA Liaison: Act as the main contact between the organization and the SETA, ensuring compliance and effective communication.

Workplace Skills Planning: Create workplace skills plans (WSPs) and annual training reports (ATRs) to outline objectives and progress.

Training Needs Analysis: Identify skill gaps through assessments and recommend targeted training interventions.

Training Provider Management: Select and manage training providers, ensuring quality programs aligned with objectives.

Grant Applications and Claims: Assist in accessing skills development grants and incentives offered by the SETA.

Monitoring and Evaluation: Track learner progress, evaluate program effectiveness, and provide feedback to management.

Skills Development Legislation Compliance: Ensure compliance with the Skills Development Act and related legislation.

Integration with B-BBEE and EE:

By aligning skills development plans with B-BBEE and EE requirements, organizations can actively contribute to equal opportunities and socioeconomic development.

This integration involves developing training interventions that prioritize designated groups, selecting training providers that embrace diversity, accessing relevant grants, and monitoring progress towards transformation goals. The harmonization of SDF functions with B-BBEE and EE enables organizations to maximize their impact, foster inclusive growth, and create a workforce that reflects the diversity of South Africa.



Learning and Development Services

At Knowledge Mining Academy, we are your trusted partner for comprehensive learning and development services. Our mission is to empower organizations with high-quality training solutions that drive growth and enhance workforce capabilities.

Learnership Management through Pre-selected Training Providers:

Our full-house learnership management service takes the hassle out of managing learnerships. We collaborate with pre-selected training providers, ensuring a seamless learning experience for participants. Best of all, this service is provided to our clients at no cost. We handle all logistics, administration, and coordination, allowing you to focus on your core business. Additionally, we offer complimentary skills development calculations for B-BBEE compliance, optimizing your skills development scorecard.

e-Learning Platform and Blended Training:

Our cutting-edge eLearning platform offers flexible and accessible training solutions. Learners can engage in self-paced online training while still benefiting from interactive face-to-face sessions in a blended format. This ensures a tailored and engaging learning experience for individuals and teams.

Formalized Internship Management with SETA Accreditation:

Our formalized internship management service, accredited by the relevant SETA, bridges the gap between education and employment. By managing internships, we help you attract top talent while earning valuable points towards your B-BBEE skills development goals.

5 Lens Enneagram Assessment and Coaching:

Our 5 Lens Enneagram assessments and coaching services provide deep insights into personality, motivations, and strengths. Through this powerful tool, our experienced coaches guide individuals in developing self-awareness, improving communication, and enhancing interpersonal relationships.

We are committed to delivering exceptional learning and development solutions tailored to your needs.



Employment Equity (EE) Services

We understand the intricacies of employment equity and the challenges of compliance in South Africa, given its dynamic nature. Our specialized services are specifically tailored to assist organizations in achieving and sustaining compliance with employment equity regulations.

Employment Equity (EE) Functions:

1. Employment Equity Planning:

Our experts assist in developing robust employment equity plans tailored to your organization's needs. We conduct workforce analysis, identify employment equity targets, and design strategies to ensure fair representation and advancement of designated groups.

2. Workforce Analysis:

We conduct in-depth workforce analysis to assess the demographic composition of your organization. By analyzing data on employee demographics, job levels, and occupational categories, we help you identify areas for improvement in bridging employment equity barriers and develop strategies to achieve employment equity goals.

3. Compliance Support:

Staying compliant with EE legislation is critical. Our team provides guidance and support in navigating the legal requirements, ensuring that your organization meets reporting deadlines, and implementing effective measures to address any gaps or challenges. We assist you in your EE submission to DOL and obtaining your EE Compliancy Certificate.



B-BBEE Services



Our B-BBEE solutions cover the following elements, enabling your organization to make progress in its transformation journey:

1. Skills Development:

We offer a range of skills development initiatives, including learnership management, training needs analysis, and skills development planning. By identifying skills gaps, designing targeted training interventions, and managing learnerships, we help you enhance your skills development scorecard.

2. Enterprise and Supplier Development:

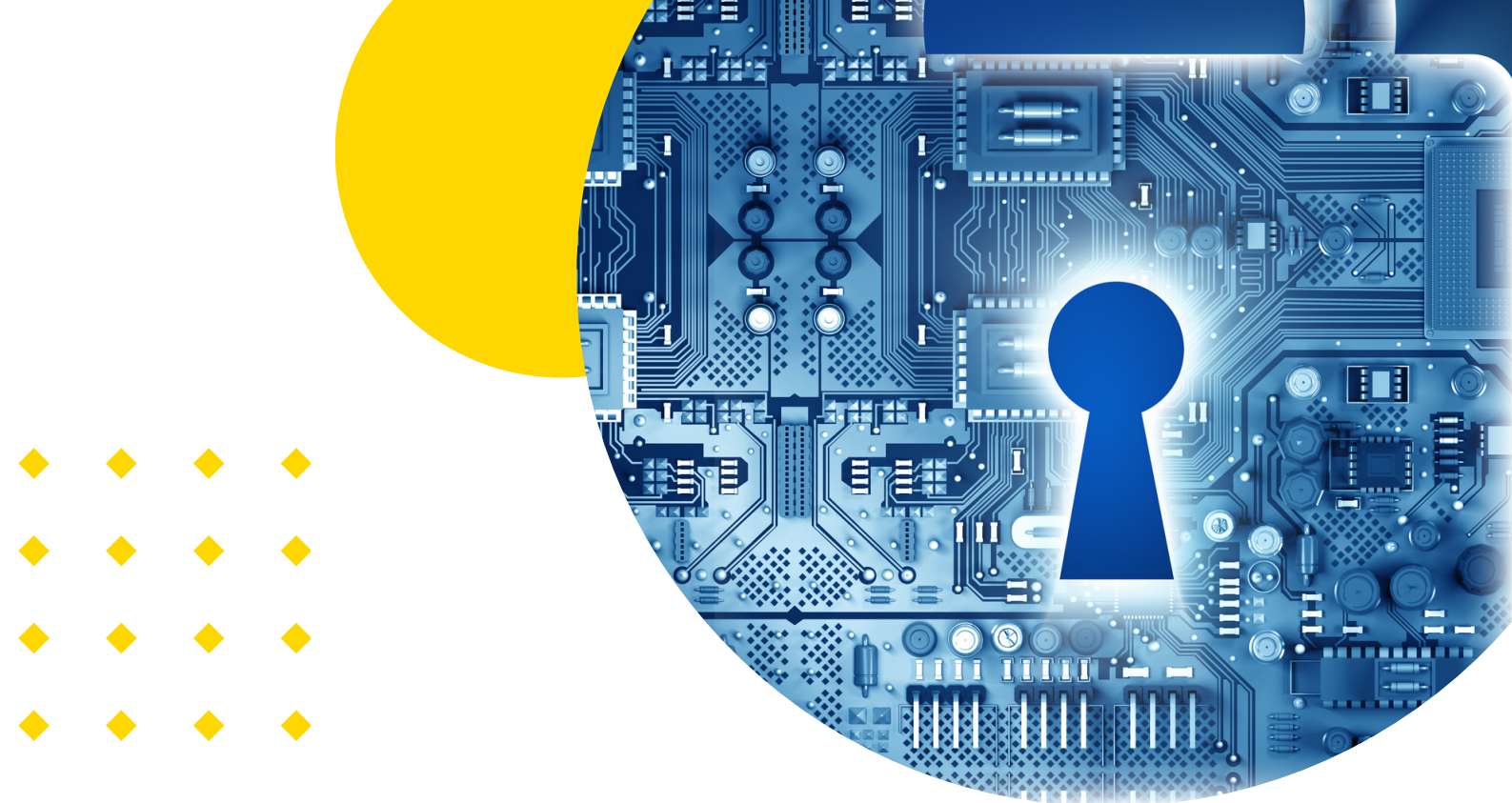
We assist in designing impactful strategies, providing mentorship to emerging businesses, and facilitating partnerships that contribute to B-BBEE transformation.

3. Socio-Economic Development:

We guide you in developing projects aligned with B-BBEE criteria, ensuring compliance, and maximizing your socio-economic development scorecard points.

Our comprehensive services can drive compliance, foster meaningful transformation, and contribute to your organization's long-term success.

Together, let's create a more inclusive and empowered future.



Contact Us

We are here to provide you with the information and support you need. Whether you have inquiries about our services, want to discuss a potential collaboration, or have any other questions, we are just a message or a call away.

In addition to answering your questions, we also offer a complimentary consultation session to understand your specific needs and explore how our tailored solutions can benefit you. This session is an opportunity for us to listen, provide insights, and offer recommendations based on your unique requirements.

We believe in the power of personalized guidance, and our consultation session aims to set you on the path to unlocking your potential and achieving your goals.

We look forward to connecting with you and embarking on a transformative journey together.

Let us help you unlock your potential, foster inclusivity, and shape a future that is built on growth, equity, and sustainable success.

CONTACT INFORMATION



+27 (0) 63 311 5913



DIANAE@KNOWLEDGEMINING.CO.ZA



WWW.KNOWLEDGEMINING.CO.ZA